

PART OF N.E. 1/4 SEC. 23, T.5N.,R.2W., S.L.B.&M.

94

MUNICIPAL ACRES

TAXING UNIT: 41

BLOCK 1

PREFIX: 09-094

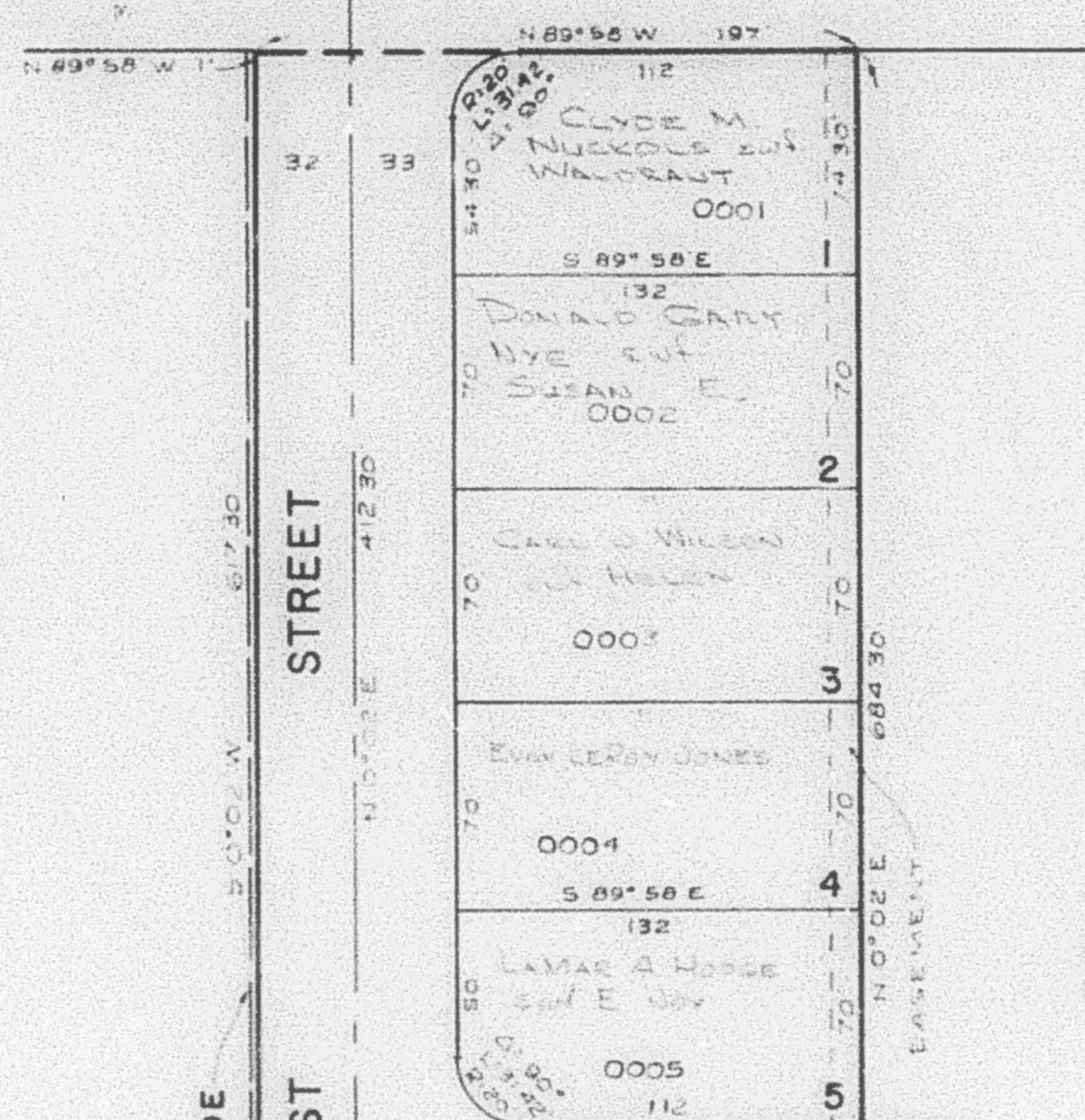
ROY CITY

SCALE 1" = 60'

SEE PAGE 1

N.W. COR. N.E. 1/4

5600 SOUTH STREET



SEE PAGE III

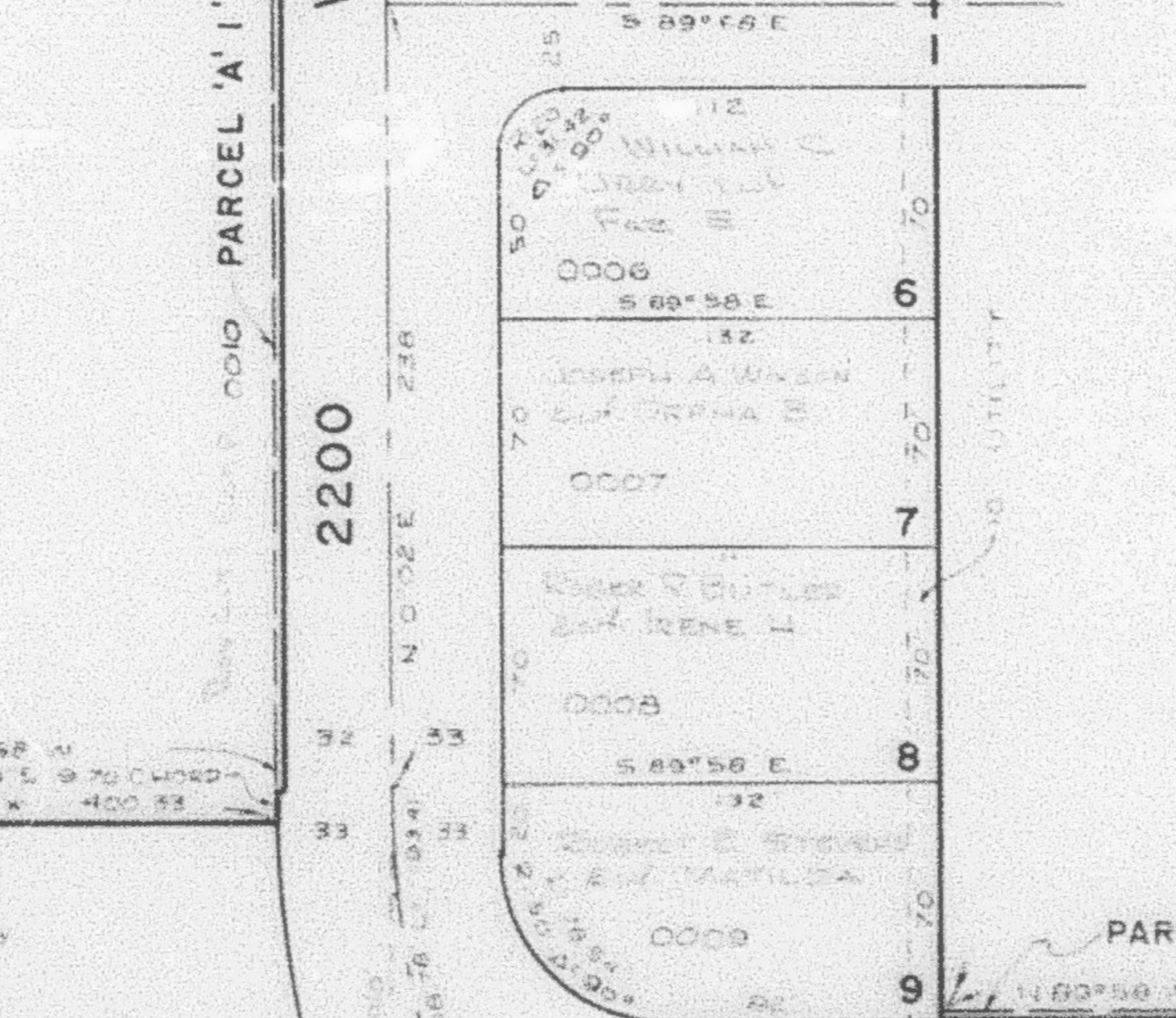
SEE PAGE 112

NOTE:

SEE ORIGINAL PLAT (11-3) FOR COMPLETE ENG. DATA. LOTS SUBJECT TO 30' BUILDING SET-BACK.

WEST STREET PARCEL 'A' 1' WIDE

5650 SOUTH ST.



PARCEL 'B' 1' WIDE

5700 SOUTH ST.

NOTE:
 THIS DATA IS UNOFFICIAL
 FIGURES BELOW WERE FURNISHED
 BY NEILSON & PREEVE FOR PLAT
 DRAFTING PURPOSES ONLY.
 NEILSON & PREEVE
 408 78 10141

SEE PAGE 93-1

SEE PAGE 96